

ULTIMATE MUSIC THEORY PREPARATORY EXAM

Total Score:
100

♪ **UMT Tip:** Always find the “pitch” for Middle C first. Find where Middle C would be on the staff and on the keyboard. Are the notes above or below Middle C?

1. Name the following notes. Draw a line from each note to the corresponding key on the keyboard (at the correct pitch).

10

A musical staff in treble clef with five notes: E (first space), G (second space), C (middle C, first ledger line), E (second space), and B (third space). Lines connect these notes to a keyboard diagram. In the keyboard, Middle C is labeled on the left. Lines connect the notes to the following keys: E (white key, 2nd line), G (black key, 3rd line), C (white key, 4th line), E (white key, 5th line), and B (black key, 4th space).

A musical staff in bass clef with five notes: F (first space), B (second space), E (third space), G (third space), and E (fourth space). Lines connect these notes to a keyboard diagram. In the keyboard, Middle C is labeled on the right. Lines connect the notes to the following keys: F (white key, 4th space), B (black key, 3rd space), E (white key, 4th space), G (black key, 5th space), and E (white key, 6th space).



ULTIMATE MUSIC THEORY PREPARATORY EXAM

♪ **UMT Tip:** Draw a small keyboard at the bottom of the page. Start by drawing a group of two popsicle sticks and then a group of three popsicle sticks. Then use the keyboard to find the pitch of each note.

A popsicle stick

2. a) For each pair of notes, circle the note which sounds higher in pitch. Name the notes.

10

B^b A^b

C[#] E^b

b) For each pair of notes, circle the note which sounds lower in pitch. Name the notes.

C[#] B[#]

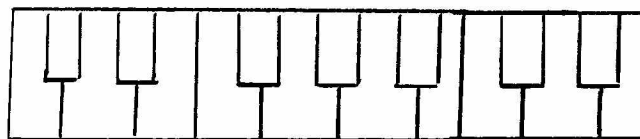
A B

c) Raise each given a note a semitone (half step). Use the same letter name. Use a whole note. Name each note.


E E[#] B^b B^b G^b G^b

d) Lower each given a note a semitone (half step). Use the same letter name. Use a whole note. Name each note.

C[#] C[#] E E^b G[#] G^b



ULTIMATE MUSIC THEORY PREPARATORY EXAM


UMT Tip: A Melodic interval - Two notes one note beside the other (separate). A melodic interval can be ascending (going up) or descending (going down). The lower (bottom) note is always counted as 1, even if it is not the first note of the interval.

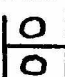
3. a) Name the interval size for each boxed interval. (Write the number size only.)

10



2
5
4
4
8

3
3
2
6
2


UMT Tip: A Harmonic interval - Two notes one above the other (together). A harmonic 1st and a harmonic 2nd are written one note beside the other (touching). A harmonic interval is played together, both notes at the same time.

b) Write the following harmonic intervals above the given notes. Use whole notes.



1
2
4
6
8

7
5
3
1
4

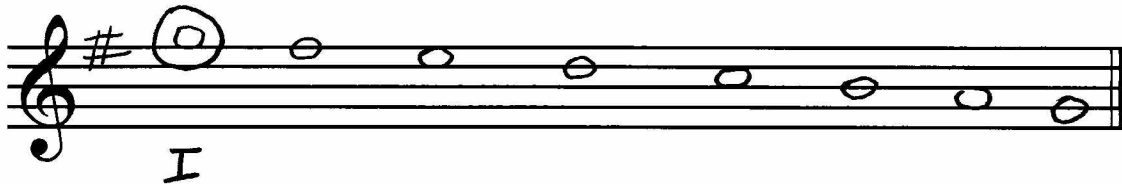


ULTIMATE MUSIC THEORY PREPARATORY EXAM

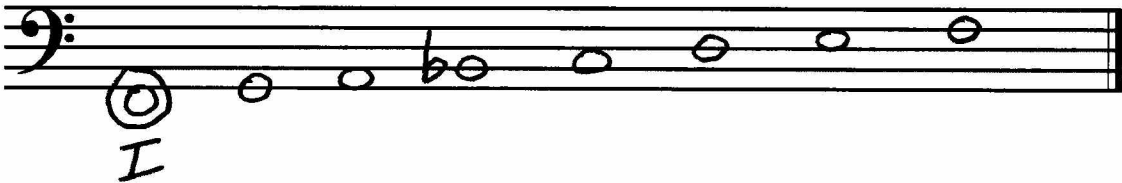
♪ **UMT Tip:** When using a Key Signature, the Key Signature must be written before the scale begins. When using accidentals, the accidental is written in front of the note.

4. Write the following scales. Use whole notes.

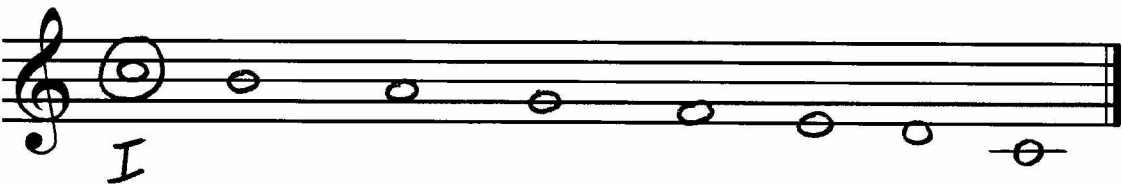
- 10 a) The scale of G Major, descending (going down) one octave. Use a Key Signature. Circle one Tonic note. Label it as I.



- b) The scale of F Major, ascending (going up) one octave. Use accidentals. Circle one Tonic note. Label it as I.



- c) The scale of C Major, descending (going down) one octave. Use a Key Signature. Circle one Tonic note. Label it as I.



- d) The scale of G Major, ascending (going up) one octave. Use accidentals. Circle one Tonic note. Label it as I.



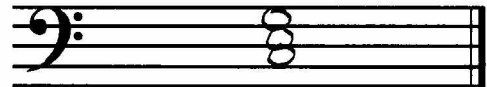
ULTIMATE MUSIC THEORY PREPARATORY EXAM

♪ **UMT Tip:** Read the instructions carefully to see whether you are using accidentals or a Key Signature. Solid (blocked) triads are written one note above the other. The notes in a Solid (blocked) triad in root position will be either all lines or all spaces.

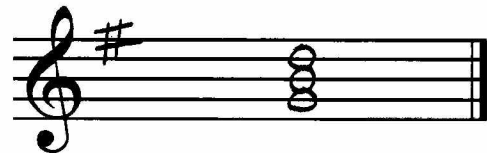
5. Write the following solid (blocked) triads in Root Position on the Tonic note.
Use whole notes.

10

C Major triad in the Bass Clef.
Use accidentals.



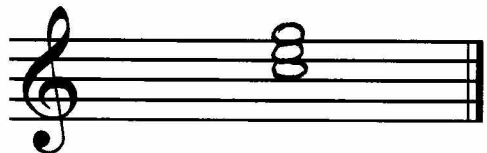
G Major triad in the Treble Clef.
Use a Key Signature.



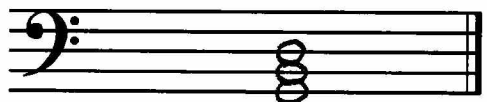
F Major triad in the Bass Clef.
Use a Key Signature.



C Major triad in the Treble Clef.
Use a Key Signature.



G Major triad in the Bass Clef.
Use accidentals.



ULTIMATE MUSIC THEORY PREPARATORY EXAM

♪ **UMT Tip:** Use scoops, Basic Beat and pulses to determine if the rests have been written correctly. Rests follow these rules: S + w, M + w; w ~ w and w ~ M.

6. Indicate if the rests in each measure are correct or incorrect. If the rests are joined correctly, circle the word "CORRECT". If the rests are joined incorrectly, then circle the word "INCORRECT".

10

Measure 1: Scoops under two eighth notes and a quarter rest. Labels: S, w, M+w. CORRECT (circled), INCORRECT (circled).

Measure 2: Scoops under a quarter note, eighth note, eighth rest, and quarter rest. Labels: S, w, M, w. CORRECT (circled), INCORRECT (circled).

Measure 3: Scoops under a quarter note, eighth note, eighth rest, and quarter rest. Labels: S, w, M+w. CORRECT (circled), INCORRECT (circled).

Measure 1: Scoops under a quarter note, eighth rest, and quarter rest. Labels: S, w, w. CORRECT (circled), INCORRECT (circled).

Measure 2: Scoops under a quarter note, eighth note, eighth rest, and quarter rest. Labels: S, w, w, w. CORRECT (circled), INCORRECT (circled).

Measure 3: Scoops under a quarter note, eighth note, eighth rest, and quarter rest. Labels: S, w, w. CORRECT (circled), INCORRECT (circled).

Measure 1: Scoops under a quarter note and a quarter rest. Labels: S, w. CORRECT (circled), INCORRECT (circled).

Measure 2: Scoops under a quarter note and a quarter rest. Labels: S, w. CORRECT (circled), INCORRECT (circled).

Measure 3: Scoops under a quarter note and a quarter rest. Labels: S, w. CORRECT (circled), INCORRECT (circled).

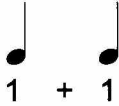
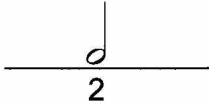

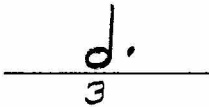
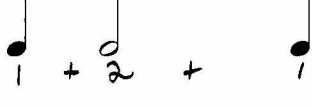
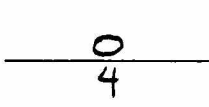

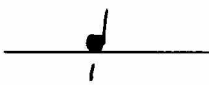

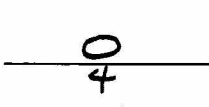
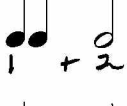
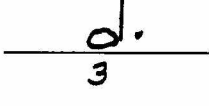
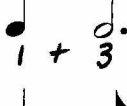
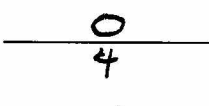
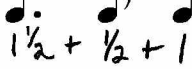
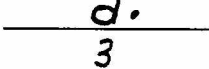
Measure 4: Scoops under a quarter note and a quarter rest. Labels: S, w. CORRECT (circled), INCORRECT (circled).



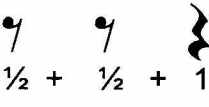
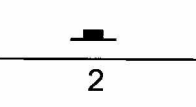
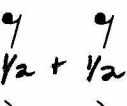
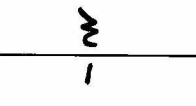

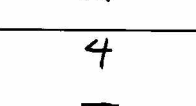
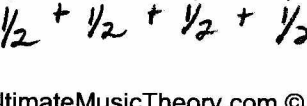
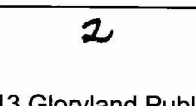
ULTIMATE MUSIC THEORY PREPARATORY EXAM

♪ UMT Tip: Write the value below each note and rest.

7. a) Draw one note that is equal in value to the combined value of the given notes.

10		=	
		=	
		=	
		=	
		=	
		=	
		=	
		=	

b) Draw one rest that is equal in value to the combined value of the given rests.

	=	
	=	
	=	
	=	



ULTIMATE MUSIC THEORY PREPARATORY EXAM

♪ **UMT Tip:** Match the definitions that you know first. Then look at the ones that you are not sure of and find the matches for them from the remaining definitions.

9. a) Draw a line to match each Italian Term with the correct definition.

Italian Term	Definition
<p>10</p> <p><i>moderato</i></p> <p><i>allegro</i></p> <p><i>largo</i></p> <p><i>a tempo</i></p> <p><i>andante</i></p>	<p>return to the original tempo</p> <p>very slow</p> <p>at a moderate tempo</p> <p>fast</p> <p>moderately slow; at a walking pace</p>

b) Write the correct dynamic sign or symbol for each Italian Term.

<i>piano</i>	<u> <i>p</i> </u>
<i>forte</i>	<u> <i>f</i> </u>
<i>mezzo piano</i>	<u> <i>mp</i> </u>
<i>diminuendo</i>	<u> <i>dim</i> or </u>
<i>mezzo forte</i>	<u> <i>mf</i> </u>



ULTIMATE MUSIC THEORY PREPARATORY EXAM

♪ **UMT Tip:** Read the questions carefully. Underline the important words. An “excerpt” is part of a piece of music.

10. Analyze the following excerpt of music by answering the questions below.

Menuetto

10

Andante

W. A. Mozart

- a) Name the title of this excerpt. Menuetto
- b) Name the composer of this excerpt. W. A. Mozart
- c) Name the tempo of this excerpt. Andante
- d) Name the key of this excerpt. F Major
- e) Name the dynamic sign in measure one. mf- mezzo forte
- f) Name the interval (number size only) at A: 6 B: 5
- g) Name the note at C: A D: B^b E: G
- h) Name the type of rest at F. eighth rest
- i) Is the interval at G harmonic or melodic? melodic
- j) Add the missing rests under the bracket at measure four.

